

Hi-Q Components

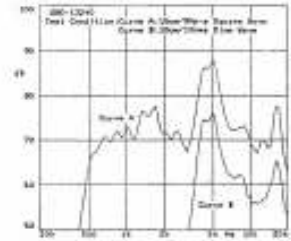
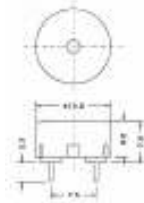
Hi-Q Electronics Ltd, PO Box 302 015, North Harbour, Auckland, New Zealand Ph + 64 9 415 3333 Fax + 64 9 415 8686

54-13240

PCB Mount - **Dia. 12.5mm**



Sound Pressure :80db min.@ 4KHz /
9.0v p-p Square Wave / 10 cm
Allowable Input Voltage : 15 v p-p max.
Current Consumption : 3 mA/ 4.0 Khz/
9v p-p Square Wave
Capacitance :10,000 pF ± 30% / 25°C
Temp. Range : -20 °C to +70°C
Pin Spacing : 7.6mm

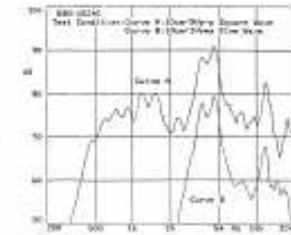
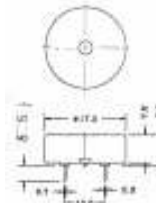


54-15240

PCB Mount - **Dia. 17mm**



Sound Pressure :80db min.@ 4KHz /
9.0v p-p Square Wave / 10 cm
Allowable Input Voltage : 30 v p-p max.
Current Consumption : 3 mA/ 4.0 Khz/
9v p-p Square Wave
Capacitance : 14,000 pF ± 30% / 25°C
Operating Temp. Range : -20 °C to +70°C
Pin Spacing : 10mm

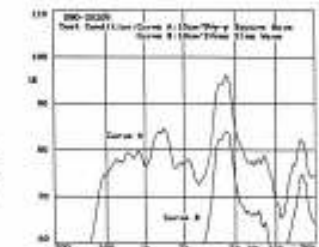
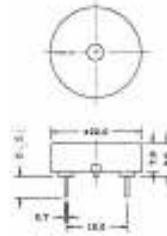


54-20205

PCB Mount - **Dia. 22mm**



Sound Pressure :85db min.@ 4KHz /
9.0v p-p Square Wave / 10 cm
Allowable Input Voltage : 30 v p-p max.
Current Consumption : 3 mA/ 4.0 Khz/
9v p-p Square Wave
Capacitance : 15,000 pF ± 30% / 25°C
Operating Temp. Range : -20 °C to +70°C
Pin Spacing : 10mm

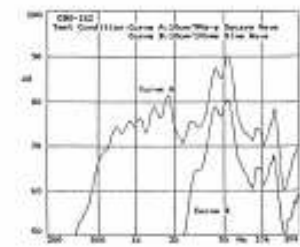
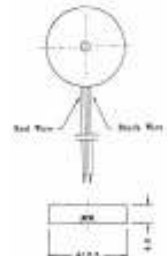


54-152

Lead Wire - **Dia. 16.8mm**



Sound Pressure :80db min.@ 4KHz /
9.0v p-p Square Wave / 10 cm
Allowable Input Voltage : 30 v p-p max.
Current Consumption : 3 mA/ 4.0 Khz/
9v p-p Square Wave
Capacitance : 10,000 pF ± 30% / 25°C
Operating Temp. Range : -20 °C to +70°C
Lead Length : 85 ± 5 mm

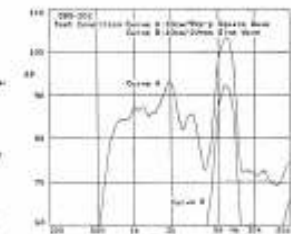
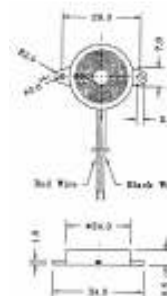


54-202

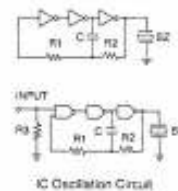
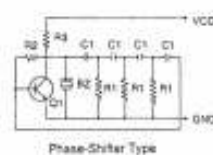
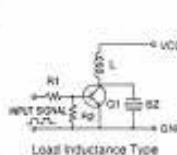
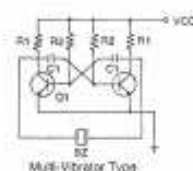
Lead Wire - **Dia. 24mm**



Sound Pressure :90db min.@ 5KHz /
9.0v p-p Square Wave / 10 cm
Allowable Input Voltage : 30 v p-p max.
Current Consumption : 3 mA/ 4.0 Khz/
9v p-p Square Wave
Capacitance : 10,000 pF ± 30% / 25°C
Operating Temp. Range : -20 °C to +60°C
Lead Length : 85 ± 5 mm



Recommended circuits for external drive types



Hi-Q Components

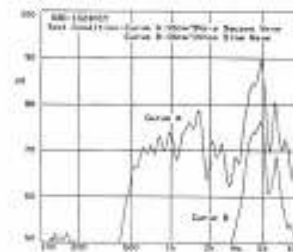
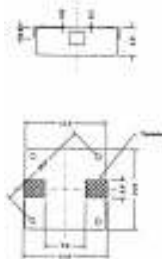
Hi-Q Electronics Ltd, PO Box 302 015, North Harbour, Auckland, New Zealand Ph + 64 9 415 3333 Fax + 64 9 415 8686

54-14240ST

Ext.Drive SMD Mount 14 x14 mm



Sound Pressure :80db min.@ 4KHz /
9.0v p-p Square Wave / 10 cm
Allowable Input Voltage : 15 v p-p max.
Current Consumption : 3 mA/ 4.0 Khz/
9v p-p Square Wave
Capacitance : 12,000 pF ± 30% / 25°C
Operating Temp.Range : 20 °C to +70°C
Case Material : PPS UL94VO



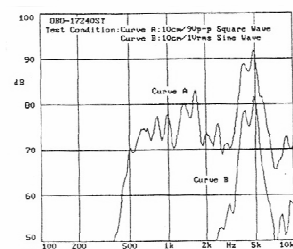
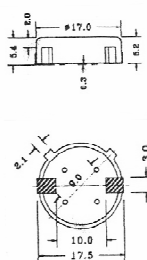
Optional version for IR reflow solder.

54-17240ST

Ext.Drive SMD Mount Dia. 17mm



Sound Pressure :80db min.@ 4KHz /
9.0v p-p Square Wave / 10 cm
Allowable Input Voltage : 15 v p-p max.
Current Consumption : 3 mA/ 4.0 Khz/
9v p-p Square Wave
Capacitance : 9,000 pF ± 30% / 25°C
Operating Temp.Range : 20 °C to +70°C
Case Material : PPS UL94VO



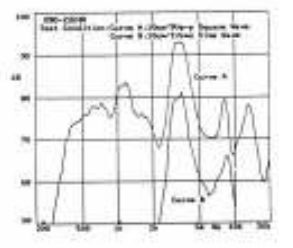
Optional version for IR reflow solder.

54-23240

Ext.Drive Vertical Mount Dia. 22mm



Sound Pressure :85db min.@ 3.5KHz /
9.0v p-p Square Wave / 10 cm
Allowable Input Voltage : 30 v p-p max.
Current Consumption : 4 mA/ 3.5 Khz/
9v p-p Square Wave
Capacitance : 15,000 pF ± 30% / 25°C
Operating Temp.Range : 20 °C to +70°C
Case Material : PBT UL94VO



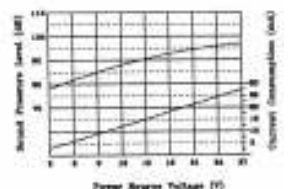
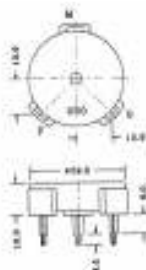
Piezo Buzzers Self Drive

54-27336

PCB Mount - Dia. 30 mm



Sound Pressure:
85dB min./ 9V DC/30cm
Oscillating Freq. : 3.5 ± 0.5 KHz
Current Consumption :
9 mA max./ 9V DC
Operating Voltage : 3 to 27 V DC
Operating.Temp. Range :
-20 °C to +70°C



Recommended Circuits
for self drive types.

