

# Hi-Q Components

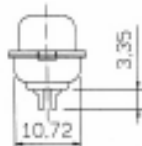
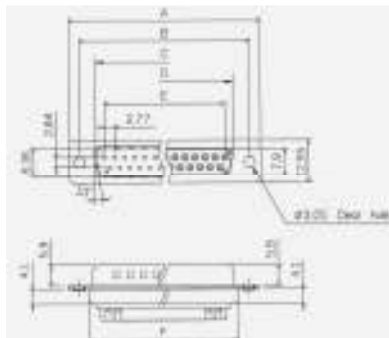
Hi-Q Electronics Ltd, PO Box 302 015, North Harbour, Auckland, New Zealand Ph + 64 9 415 3333 Fax + 64 9 415 8686

## D-SUB Straight Solder Type

- ★ Quality Brass (Male) or Phosphor Bronze (Female) Gold Plated Contacts.
- ★ Housing PBT 30% Glass (UL94VO.)
- ★ Current Rating: 5A
- ★ Contact Resistance: 30mΩ max at 100mA DC
- ★ Dielectric Strength: 1000VAC for 1 min.
- ★ Operating Temp. -55°C to +105°C.



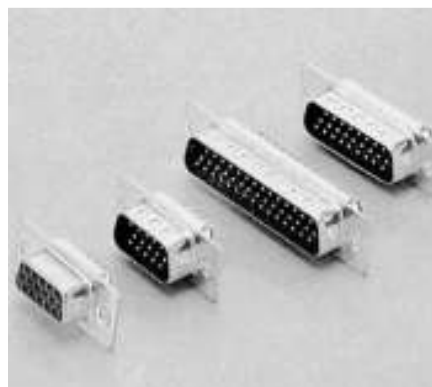
Part No 32-100 xx P(Male) or S(Female)  
xx = No of Contacts (09,15,25,37 or 50)



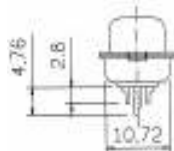
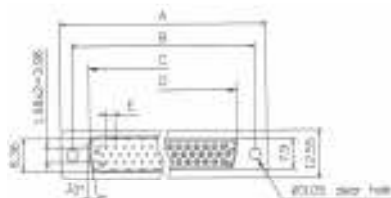
Positions	A	B	C	D	E	F
9	30.81	24.99	16.92	16.33	11.08	19.20
15	39.14	33.32	25.50	24.66	19.39	27.70
25	53.04	47.04	38.96	38.38	33.24	41.10
37	69.32	63.50	55.42	54.84	49.86	57.30

## D-SUB Straight Solder Type High Density

- ★ Quality Brass (Male) or Phosphor Bronze (Female) Gold Plated Contacts.
- ★ Housing PBT 30% Glass (UL94VO.)
- ★ Current Rating: 3A
- ★ Contact Resistance: 20mΩ max at 1A DC
- ★ Dielectric Strength: 1000VAC for 1 min.
- ★ Operating Temp. -55°C to +105°C.



Part No 32-104 xx P(Male) or S(Female)  
xx = No of Contacts (15,26,44,62 or 78)



Positions	A	B	C	D	E	F
15	30.81	24.99	16.92	16.33	2.29	19.20
26	39.14	33.32	25.50	24.66	2.29	27.70
44	53.04	47.04	38.96	38.38	2.29	41.10
62	69.32	63.50	55.42	54.84	2.41	57.30

Also available: EMI Filtered Types, Crimp Contacts, High Density Types, Dual Port.

# Hi-Q Components

Hi-Q Electronics Ltd, PO Box 302 015, North Harbour, Auckland, New Zealand Ph + 64 9 415 3333 Fax + 64 9 415 8686

## D-SUB Connectors Right Angle PCB Mounting

- ★ Quality Brass (Male) or Phosphor Bronze (Female) Gold Plated Contacts.
- ★ Housing PBT 30% Glass (UL94VO.)
- ★ Current Rating: 5A
- ★ Contact Resistance: 30mΩ max at 100mA DC
- ★ Dielectric Strength: 1000VAC for 1 min.
- ★ Operating Temp. -55°C to +105°C.

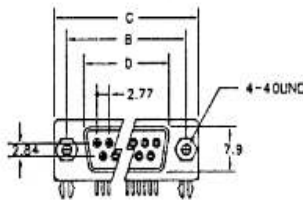


Female

### Standard Type

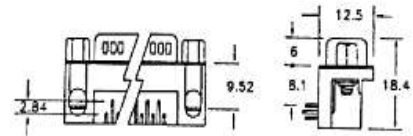
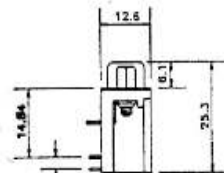
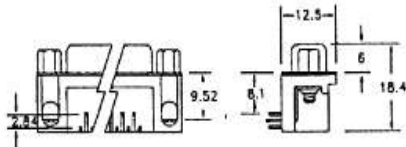
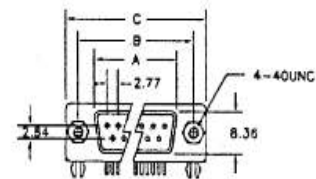
Part No. 32-107B xx P (Male) or S (Fem)  
xx = No of Contacts (09,15, 25 or 37)

Male



### Dimension

Position	A	B	C	D	E
9	16.92	24.99	30.81	19.28	16.33
15	25.25	33.62	39.14	27.51	24.66
25	38.96	47.04	53.04	41.30	38.38
37	55.42	63.50	69.32	57.71	54.84



**Extended Reach Type** Part No. 32-107CxxP (Male) or S(Female) xx = No of Contacts (09,15, 25 or 37)

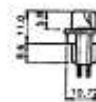
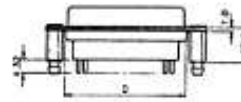
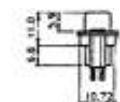
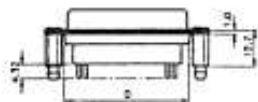
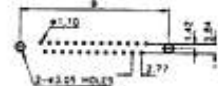
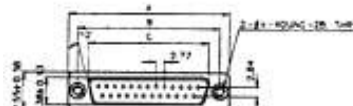
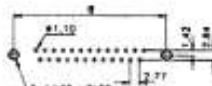
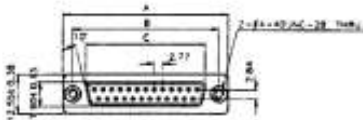
## Straight PCB Mounting

- ★ Quality Brass (Male) or Phosphor Bronze (Female) Gold Plated Contacts.
- ★ Housing: Glass Filled Nylon (UL94VO.)
- ★ Current Rating: 5A
- ★ Contact Resistance: 15mΩ max
- ★ Dielectric Strength: 1000VAC for 1 min.
- ★ Operating Temp. -55°C to +105°C.



Male

Female



	A	B	C	D
	±0.38	±0.13	±0.13	±0.13
09	30.81	24.99	16.33	19.28
15	39.14	33.32	24.66	27.51
25	53.04	47.04	38.38	41.30
37	69.32	63.50	54.84	57.71

	A	B	C	D
	±0.38	±0.13	±0.13	±0.13
09	30.81	24.99	16.33	19.28
15	39.14	33.32	24.66	27.51
25	53.04	47.04	38.38	41.30
37	69.32	63.50	54.84	57.71

### Standard Types

Part No. 32-155 xx P (Male) or S (Female) xx = No of Contacts (09,15,25 or 37)

Variations available: Holes, Threads, Screw Locks, Board Locks, Setbacks, Heights.

