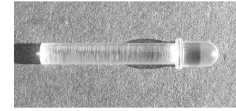


Light pipes are ideal for applications where an automatically placed surface mount LED requires its output to a front panel. Light pipes will also protect circuits from accidental damage from ESD by isolating the PCB from potential contact.

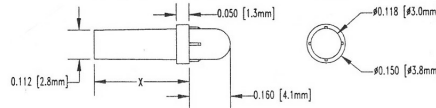
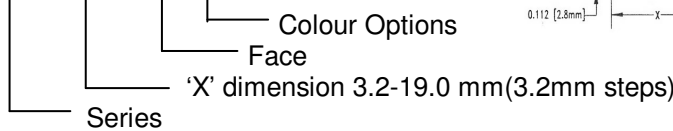
Panel Light Pipes PLP1 Series

- ★ Serviceability and design flexibility options
- ★ PLP Series press into a 3.0-3.12mm panel hole
- ★ Lengths range from 3.2 to 19.0 mm



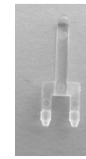
Part Number Example

BPLP1 250 R XX



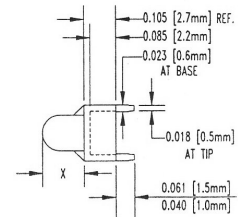
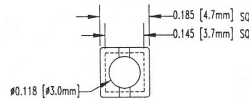
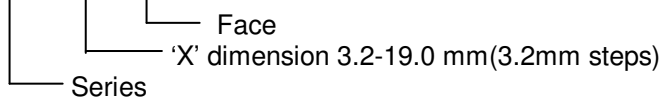
Vertical Light Pipes VLP Series

- ★ Protect circuits from ESD
- ★ Round or flat face options
- ★ For use with SMD series LED's



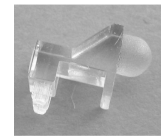
Part Number Example

BVLP 250 R



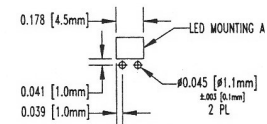
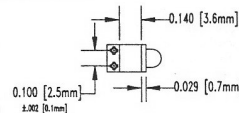
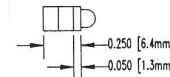
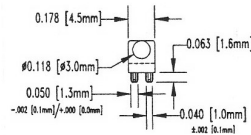
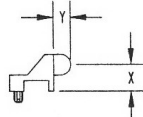
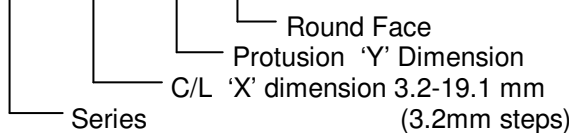
90° Light Pipes for Surface Mounts SLP3 Series

- ★ Centrelines 'X' from 3.8 to 19.0mm
- ★ For use with SMD series LED's
- ★ Wide viewing angles
- ★ ESD protection



Part Number Example

BSLP3 1500 100 R



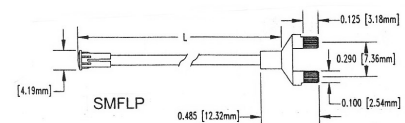
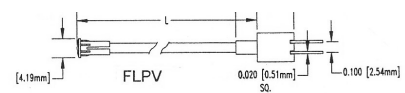
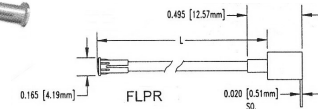
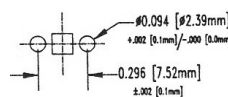
Flexible Light Pipes FLP & SMF Series

- ★ Ultimate in design flexibility
- ★ Highly transmissive materials
- ★ Lens cap pre-assembled with monofibre
- ★ Monofibre press fits into an adaptor on the PCB assuring tight retention and shock resistance.
- ★ Std lengths up to 48" in 3" steps.



PCB Adaptor Styles

- FLPR Right Angle Through hole LED Adaptor
- FLPV Vertical Through hole LED Adaptor
- SMFLP Adaptor compatible with all SMD LED's



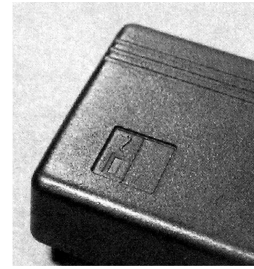
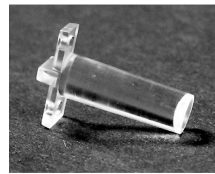
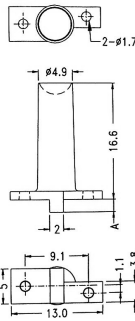
For more detail call us and request a full BivarOpto Catalogue or visit internet site www.bivar.com

Rectangular Panel Mount

★ Neat indicator light solution.

35-LEM3

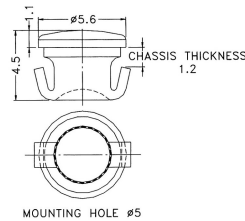
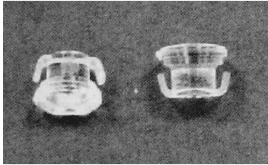
Part No	Dimension A
35-LEM31.8	1.8
35-LEM32.2	2.2



5mm Panel Mount

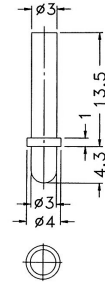
★ Snaps into 5mm hole.

35-LEM7



3mm Extension

35-LEM5



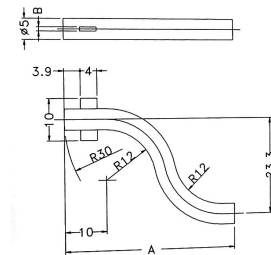
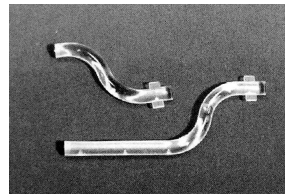
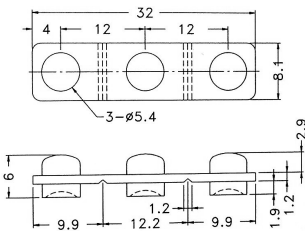
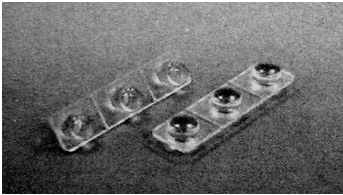
Light Pipes

35-LPG Series

5mm Panel Mount - 3 way

★ Snap off to make 1 way & 2 way.

35-LEM4

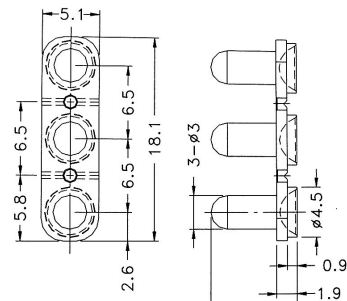
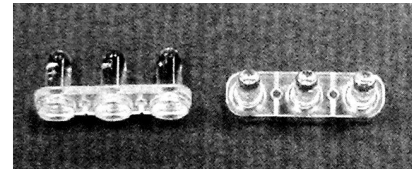


35-LPG42 A = 41.5 B = 1.3 mm
35-LPG77 A = 76.5 B = 1.2 mm

3mm Panel Mount - 3 way

★ Snap to make 1 way & 2 way.

35-LEM11



Right Angle SMT Light Pipe

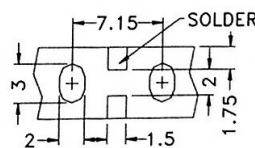
35-LPE1 Series

★ Multiple centreline heights & multi-levels.

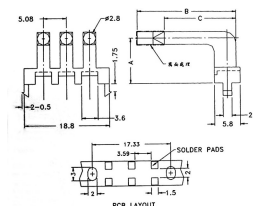
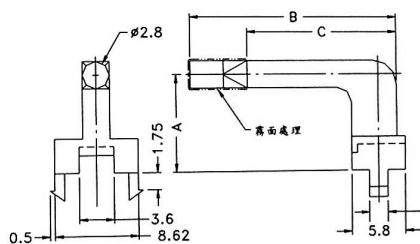
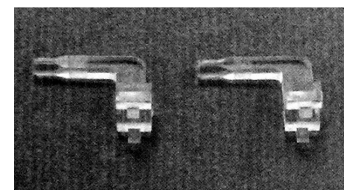
★ Available also as 2, 3 and 4 way.

Part No	A	B	C
35-LPE10516	5.0	16.0	10.0
35-LPE10519	5.0	19.0	13.0
35-LPE10522	5.0	22.0	16.0
35-LPE11016	10.0	16.0	10.0
35-LPE11019	10.0	19.0	13.0
35-LPE11022	10.0	22.0	16.0
35-LPE11516	15.0	16.0	10.0
35-LPE11519	15.0	19.0	13.0
35-LPE11522	15.0	22.0	16.0

Material : Polycarbonate



PCB LAYOUT.



3 way