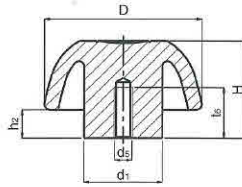


## 1138 - Knob MTC Thermoplastic - Female

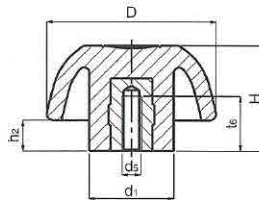
- ★ Available in black reinforced thermoplastic
- ★ Moulded thread



Part Number	D	H	d1	d5	t6	h2
11-KPMB25M5	25	16	13	M5	12	5
11-KPMB32M6	32	20	15	M6	15	6
11-KPMB40M8	40	25	16	M8	20	8
11-KPMB50M10	50	31	21	M10	24	9

## 1138 - Knob MTC Thermoplastic - Female

- ★ Available in black or orange thermoplastic
- ★ Threaded female brass insert

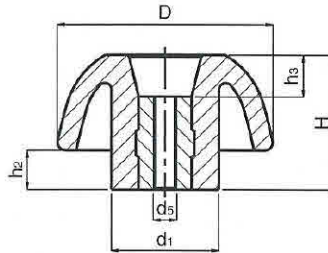


11-KPMX X = B Black , O Orange

Part Number	D	H	d1	d5	t6	h2
11-KPMX25B4	25	16	13	M4	8.5	5
11-KPMX25B5	25	16	13	M5	9	5
11-KPMX25B6	25	16	13	M6	10	5
11-KPMX32B5	32	20	15	M5	9	6
11-KPMX32B6	32	20	15	M6	10	6
11-KPMX40B6	40	25	16	M6	10	8
11-KPMX40B8	40	25	16	M8	14	8
11-KPMX40B10	40	25	16	M10	17	8
11-KPMX50B8	50	31	21	M8	14	9
11-KPMX50B10	50	31	21	M10	18	9
11-KPMX63B10	63	39	23	M10	17	12
11-KPMX63B12	63	39	23	M12	19	12
11-KPMX63B16	63	39	23	M16	27	12

## 1138 - Knob MTC Thermoplastic - Female

- ★ Available in black or orange reinforced thermoplastic
- ★ Threaded female brass insert open through

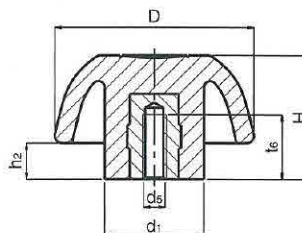


11-KPMX X = B - Black , O - Orange

Part Number	D	H	d1	d5	t6	h2	h3
11-KPMX25B6O	25	16	13	M6	10	5	5
11-KPMX32B6O	32	20	15	M6	10	6	6
11-KPMX40B6O	40	25	16	M6	10	8	11
11-KPMX40B8O	40	25	16	M8	14	8	11
11-KPMX40B10O	40	25	16	M10	17	8	11
11-KPMX50B8O	50	31	21	M8	14	9	17
11-KPMX50B10O	50	31	21	M10	18	9	17
11-KPMX63B10O	63	39	23	M10	17	12	16
11-KPMX63B12O	63	39	23	M12	19	12	16

## 1138 - Knob MTC Thermoplastic - Female

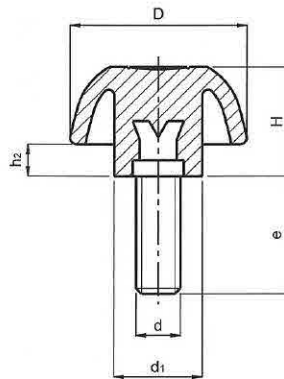
- ★ Available in black thermoplastic
- ★ Threaded stainless steel inserts



Part Number	D	H	d1	d5	t6	h2
11-KPMB32SS6	32	20	15	M6	10	6
11-KPMB40SS8	40	25	16	M8	14	8
11-KPMB50SS10	50	31	21	M10	18	9

## 1138 - Knob MTC Thermoplastic - Male

- ★ Available in black & orange reinforced thermoplastic
- ★ Treated threaded steel stud

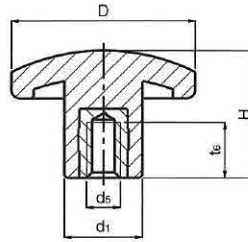


11-KPMX X = B - Black , O - Orange

Part Number	D	H	d1	d	e	h2
11-KPMX25S4-15	25	16	13	M4	15	5
11-KPMX25S5-20	25	16	13	M5	20	5
11-KPMX25S6-20	25	16	13	M6	20	5
11-KPMX32S6-10	32	20	15	M6	10	6
11-KPMX32S6-20	32	20	15	M6	20	6
11-KPMX32S6-30	32	20	15	M6	30	6
11-KPMX32S8-27	32	20	15	M8	27	6
11-KPMX40S6-15	40	25	16	M6	15	8
11-KPMX40S6-20	40	25	16	M6	20	8
11-KPMX40S6-30	40	25	16	M6	30	8
11-KPMX40S6-40	40	25	16	M6	40	8
11-KPMX40S8-15	40	25	16	M8	15	8
11-KPMX40S8-20	40	25	16	M8	20	8
11-KPMX40S8-33	40	25	16	M8	33	8
11-KPMX40S8-47	40	25	16	M8	47	8
11-KPMX40S10-20	40	25	16	M10	20	8
11-KPMX40S10-33	40	25	16	M10	33	8
11-KPMX40S10-44	40	25	16	M10	44	8
11-KPMX50S8-15	50	31	21	M8	15	9
11-KPMX50S8-27	50	31	21	M8	27	9
11-KPMX50S8-40	50	31	21	M8	40	9
11-KPMX50S10-33	50	31	21	M10	33	9
11-KPMX50S10-50	50	31	21	M10	50	9
11-KPMX63S10-33	63	39	23	M10	33	12
11-KPMX63S12-40	63	39	23	M12	40	12
11-KPMX63S16-55	63	39	23	M16	55	12

## 1139 - Knob Starplast Thermoplastic - Female

- ★ Available in black or orange thermoplastic
- ★ Threaded female brass insert

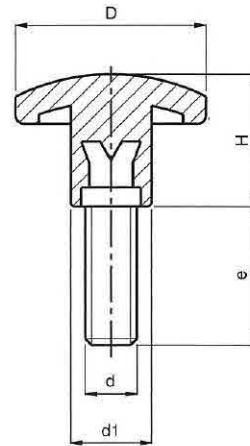


11-KPSPX X = B Black , O Orange

Part Number	D	H	d5	t6	d1
11-KPSPX33B6	33	22	M6	10	14
11-KPSPX33B8	33	22	M8	14	14

## 1139 - Knob Starplast Thermoplastic - Male

- ★ Available in black or orange thermoplastic
- ★ Treated threaded steel stud



11-KPSPX X = B Black , O Orange

Part Number	D	H	d	e	d1
11-KPSPX33S6-15	33	22	M6	15	14
11-KPSPX33S6-20	33	22	M6	20	14
11-KPSPX33S6-30	33	22	M6	30	14
11-KPSPX33S6-40	33	22	M6	40	14
11-KPSPX33S8-20	33	22	M8	20	14
11-KPSPX33S8-27	33	22	M8	27	14
11-KPSPX33S8-47	33	22	M8	47	14

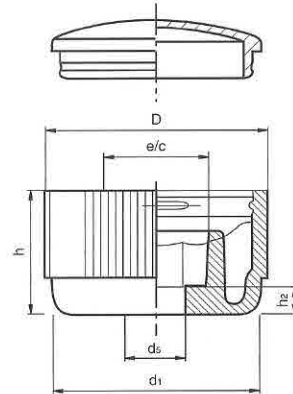
## 1196 – Contact Thermoplastic Knob - Female

- ★ Black reinforced thermoplastic base with cap.
- ★ Cap colours – Black, orange, red, blue, yellow, and silver



11-KPCX see below

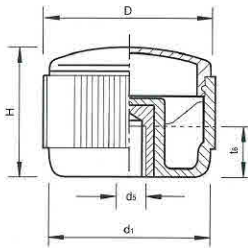
X =    B – Black cap  
          O – Orange  
          R – Red  
          B – Blue  
          Y – Yellow  
          S – Silver



Part Number	D	H	d1	d5	h2	for	e/c
11-KPCX40H6	40	28	37	6.3	5	M6	10
11-KPCX40H8	40	28	37	8.5	5	M8	13
11-KPCX40H10	40	28	37	10.5	5	M10	16

## 1196 – Contact Thermoplastic Knob - Female

- ★ Black thermoplastic base with cap.
- ★ Cap colours – Black, orange, red, blue, yellow, and silver
- ★ Threaded female brass insert



11-KPCX see below

X =    B – Black cap  
          O – Orange  
          R – Red  
          B – Blue  
          Y – Yellow  
          S – Silver



Part Number	D	H	d1	d5	T6
11-KPCX40B6	40	28	37	M6	10
11-KPCX40B8	40	28	37	M8	14
11-KPCX40B10	40	28	37	M10	17

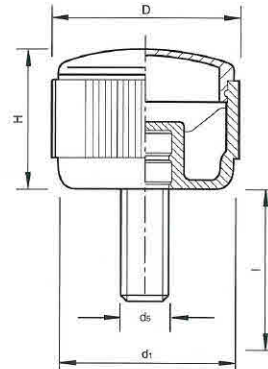
## 1196 – Contact Thermoplastic Knob - Male

- ★ Black thermoplastic base with cap.
- ★ Cap colours – Black, orange, red, blue, yellow, and silver
- ★ Treated threaded steel stud



11-KPCX see below

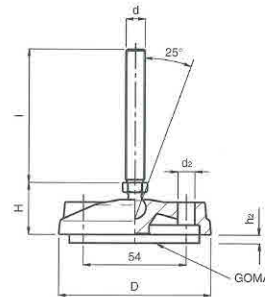
X = B – Black cap  
O – Orange  
R – Red  
B – Blue  
Y – Yellow  
S – Silver



Part Number	D	H	d1	d5	l
11-KPCX40S6-15	40	28	37	M6	15
11-KPCX40S6-30	40	28	37	M6	30
11-KPCX40S6-40	40	28	37	M6	40
11-KPCX40S8-15	40	28	37	M8	15
11-KPCX40S8-30	40	28	37	M8	30
11-KPCX40S8-47	40	28	37	M8	47
11-KPCX40S10-20	40	28	37	M10	20
11-KPCX40S10-30	40	28	37	M10	30
11-KPCX40S10-40	40	28	37	M10	40

## 1190 – Adjustable feet with Thru Holes

- ★ Reinforced P.A. 6, black with treated steel stud
- ★ Max Static Load 10.000 N ( vertical stud )



Part Number	D	H	d	l	h2	d2
11-AFP80S8-45	80	27	M8	45	2	9
11-AFP80S8-70	80	27	M8	70	2	9
11-AFP80S10-45	80	27	M10	45	2	9
11-AFP80S10-70	80	27	M10	70	2	9
11-AFP80S12-45	80	27	M12	45	2	9
11-AFP80S12-70	80	27	M12	70	2	9
11-AFP80S14-70	80	27	M14	70	2	9
11-AFP80S14-120	80	27	M14	120	2	9
11-AFP80S16-70	80	27	M16	70	2	9
11-AFP80S16-120	80	27	M16	120	2	9
11-AFP80S20-100	80	27	M20	100	2	9