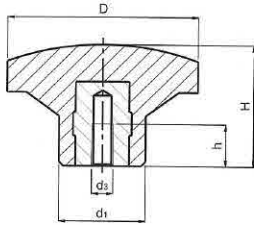


1118 - Knobs – Star Stub - Female

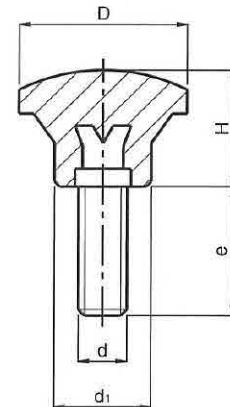
- ★ Available in Black Duroplast
- ★ Threaded Female Brass Insert
- ★ Also available with Treated Steel Insert



Part Number	D	H	d1	d3	h
11-KPSB22B6	22	19	12	M6	10
11-KPSB33B6	33	23	19	M6	10
11-KPSB33B8	33	23	19	M8	14
11-KPSB44B8	44	27	23	M8	14
11-KPSB44B10	44	27	23	M10	17
11-KPSB55B10	55	33	25	M10	17
11-KPSB66B12	66	42	30	M12	19

1118 - Knobs – Star Stub - Male

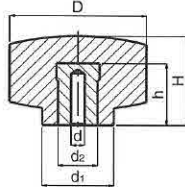
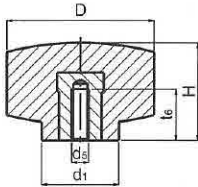
- ★ Available in Black Duroplast
- ★ Treated Steel Stud



Part Number	D	H	d	e	d1
11-KPSB22S5-20	22	19	M5	20	12
11-KPSB22S6-20	22	19	M6	20	12
11-KPSB33S6-15	33	23	M6	15	19
11-KPSB44S8-15	44	27	M8	15	23
11-KPSB44S8-27	44	27	M8	27	23
11-KPSB55S10-33	55	34	M10	33	25
11-KPSB66S12-45	66	42	M12	45	30

1120 - Knobs – Forza - Female

- ★ Available in Black Duroplast
- ★ Threaded Female Brass Insert
- ★ Also available with Treated Steel Insert



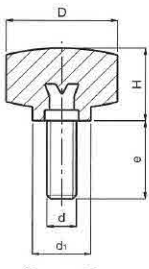
Brass insert – B
eg. 11-KPFB25B6

Treated Steel insert – S
eg. 11-KPFB25S6

Part Number	D	H	d	d5	h	t6	d1	d2
11-KPFB25S5	25	19	5.25	-	15	-	16	12
11-KPFB25B6	25	19	-	M6	-	10	16	-
11-KPFB32S5	32	22	5.25	-	15	-	18	12
11-KPFB32B6	32	22	-	M6	-	10	18	-
11-KPFB40S5	40	27	5.25	-	17	-	21	14
11-KPFB40B8	40	27	-	M8	-	14	21	-
11-KPFB63S5	63	34	5.25	-	21	-	28	16
11-KPFB63B10	63	34	-	M10	-	17	28	-

1120 - Knobs – Forza - Male

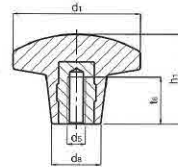
- ★ Available in Black Duroplast
- ★ Treated Threaded Steel Stud



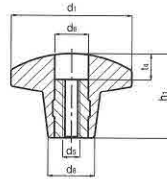
Part Number	D	H	d	e	d1
11-KPFB25S6-20	25	19	M6	20	16
11-KPFB32S6-25	32	22	M6	25	18
11-KPFB40S8-27	40	27	M8	27	21
11-KPFB50S10-33	50	32	M10	33	23
11-KPFB63S12-40	63	34	M12	40	28

1121 - Knobs – Star - Female

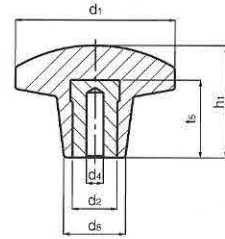
- ★ Available in Black Duroplast
- ★ Threaded Female Brass Insert
- ★ Also available with Treated Steel Insert



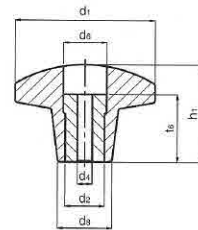
Brass insert – B
eg. 11- KPD5B20B4



Brass insert open-O
eg. 11-KPD5B20B4O



Treated Steel insert – S
eg. 11- KPD5B40S8



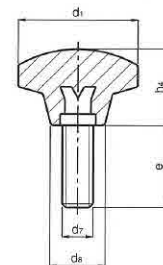
Treated Steel insert open – O
eg. 11- KPD5B40S8O

Part Number	d1	d2	d4	d5	d6	d8	h1	t4	t5	t6
11-KPD5B20B4	20	-	-	M4	-	10	14	-	-	8
11-KPD5B20B4O	20	-	-	M4	4.3	10	14	6	-	-
11-KPD5B32B6	32	-	-	M6	-	14	20	-	-	10
11-KPD5B32B6O	32	-	-	M6	6.4	14	20	10	-	-
11-KPD5B40B8	40	-	-	M8	-	-	26	-	-	14
11-KPD5B40B8O	40	-	-	M8	8.4	18	26	12	-	-
11-KPD5B40S5	40	12	5.25	-	-	18	26	-	15	-
11-KPD5B40S5O	40	12	5.25	-	8.4	18	26	-	-	14
11-KPD5B50S5	50	14	5.25	-	-	22	32	-	17	-
11-KPD5B50S5O	50	14	5.25	-	10.5	22	32	-	-	17
11-KPD5B63S5	63	16	5.25	-	-	26	38	-	21	-
11-KPD5B63S5O	63	16	5.52	-	13	26	38	-	-	19

1121- Knobs – Star - Male

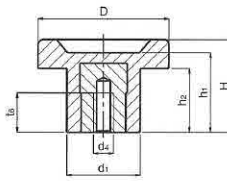
- ★ Available in Black Duroplast
- ★ Treated Threaded Steel Stud

Part Number	d1	h4	d7	e	d8
11-KPD5B20S4-15	20	14	M4	15	10
11-KPD5B25S5-20	25	15	M5	20	12
11-KPD5B32S6-20	32	20	M6	20	14
11-KPD5B32S6-40	32	20	M6	40	14
11-KPD5B40S8-27	40	26	M8	27	18
11-KPD5B40S8-47	40	26	M8	47	18
11-KPD5B50S10-44	50	32	M10	44	22
11-KPD5B63S12-40	63	38	M12	40	26

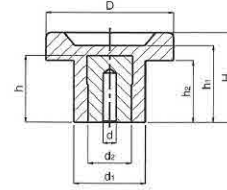


1124 - Knobs – FZ - Female

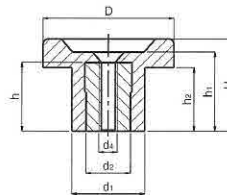
- ★ Available in Black Duroplast
- ★ Threaded Female Brass Insert
- ★ Also available with Treated Steel Insert



Brass insert – B
eg. 11- KPFB30B6



Treated Steel insert – S
eg. 11- KPFB30S6



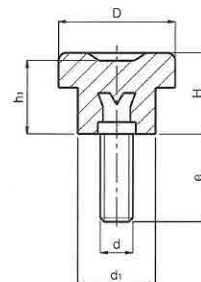
Treated Steel insert open - S
eg. 11-KPFB30S6O

Part Number	D	H	d	d4	h	t6	d2	h1	h2	d1
11-KPFB30B6	30	25	-	M6	-	10	-	24	16	20
11-KPFB30S5	30	25	5.25	-	17	-	14	24	16	20
11-KPFB30S6O	30	25	-	M6	17	-	14	24	16	20
11-KPFB45B8	45	28	-	M8	-	14	-	25	17	24
11-KPFB45S5	45	28	5.25	-	21	-	16	25	17	24
11-KPFB45S8O	45	28	-	M8	21	-	16	25	17	24

1124 - Knobs – FZ - Male

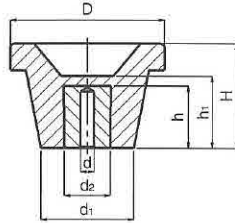
- ★ Available in Black Duroplast
- ★ Treated Threaded Steel Stud

Part Number	D	H	d	e	d1	h1
11-KPFB30S8-27	30	25	M8	27	20	24
11-KPFB45S10-33	45	28	M10	33	24	25
11-KPFB60S12-40	60	32	M12	40	28	28



1125 - Knob CL Phenolic - Female

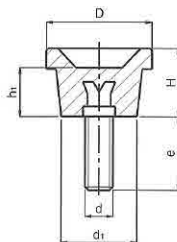
- ★ Available in Black Duroplast
- ★ Treated Steel Insert



Part Number	D	H	d	h	d2	h1	d1
11-KPCLB37S5	37	30	5.25	17	14	21	22
11-KPCLB44S5	44	34	5.25	17	14	24	26
11-KPCLB52S5	52	36	5.25	21	16	25	31
11-KPCLB60S5	60	41	5.25	21	16	27	36
11-KPCLB70S5	70	44	5.25	22	18	29	38
11-KPCLB80S5	80	45	5.25	22	18	30	37
11-KPCLB90S5	90	46	5.25	22	18	31	40

1125 - Knob CL Phenolic - Male

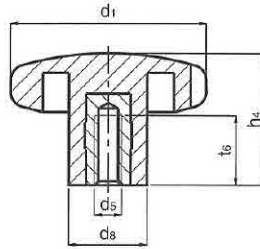
- ★ Available in Black Duroplast
- ★ Treated Steel Stud



Part Number	D	H	d	e	d1	h1
11-KPCLB37S8-27	37	30	M8	27	22	21
11-KPCLB44S10-33	44	34	M10	33	26	24
11-KPCLB52S10-33	52	36	M10	33	31	25
11-KPCLB60S12-40	60	41	M12	40	36	27
11-KPCLB70S12-45	70	44	M12	45	38	29
11-KPCLB80S16-55	80	45	M16	55	37	30
11-KPCLB90S20-63	90	46	M20	63	40	31

1126 - Knobs – Star - Female

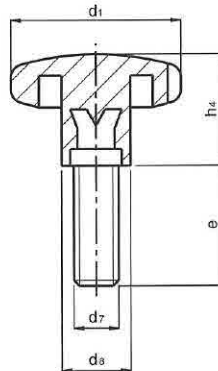
- ★ Available in Black Duroplast
- ★ Threaded Female Brass Insert



Part Number	d1	h4	d5	t6	d8
11-KPD6B20B4	20	13	M4	8.5	10
11-KPD6B25B5	25	16	M5	9	12
11-KPD6B32B6	32	20	M6	10	13
11-KPD6B40B8	40	25	M8	14	19
11-KPD6B50B10	50	32	M10	17	20
11-KPD6B63B12	63	40	M12	19	23
11-KPD6B80B16	80	50	M16	27	30

1126 - Knobs – Star - Male

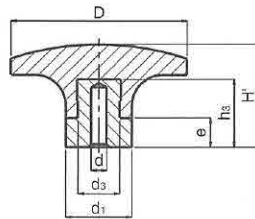
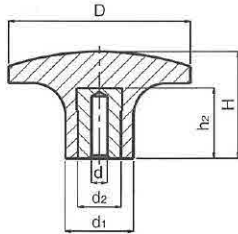
- ★ Available in Black Duroplast
- ★ Treated threaded Steel Stud



Part Number	d1	h4	d7	e	d8
11-KPD6B20S4-15	20	13	M4	15	10
11-KPD6B25S5-20	25	16	M5	20	12
11-KPD6B32S6-20	32	20	M6	20	13
11-KPD6B32S6-40	32	20	M6	40	13
11-KPD6B40S8-27	40	25	M8	27	19
11-KPD6B40S8-47	40	25	M8	47	19
11-KPD6B50S10-44	50	32	M10	44	20
11-KPD6B50S10-64	50	32	M10	64	20
11-KPD6B63S12-40	63	40	M12	40	23
11-KPD6B63S12-60	63	40	M12	60	23
11-KPD6B80S16-55	80	50	M16	55	30
11-KPD6B80S16-75	80	50	M16	75	30

1133 - Knob Three Prong - Female

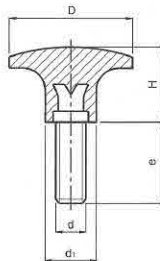
- ★ Available in Black Duroplast
- ★ Treated Steel Insert



Part Number	D	H	H'	h2	h3	d	d1	d2	d3	e
11-KPTP30S5	30	17	-	12	-	5.25	11	8	-	-
11-KPTP40S5	40	22	-	14	-	5.25	15	10	-	-
11-KPTP50S5	50	26	-	17	-	5.25	20	14	-	-
11-KPTP60S5	60	30	-	21	-	5.25	25	16	-	-
11-KPTP30S5S	30	-	18	-	14	5.25	11	-	8	6
11-KPTP40S5S	40	-	24.5	-	18	5.25	15	-	11	8
11-KPTP50S5S	50	-	29	-	22	5.25	20	-	15	11
11-KPTP60S5S	60	-	34	-	29	5.25	25	-	19	15

1133 - Knob Three Prong - Male

- ★ Available in Black Duroplast
- ★ Treated Threaded Steel Stud



Part Number	D	H	d	e	d1
11-KPTP30S6-25	30	17	M6	25	11
11-KPTP40S8-33	40	22	M8	33	15
11-KPTP50S10-33	50	26	M10	33	20
11-KPTP60S12-40	60	30	M12	40	25