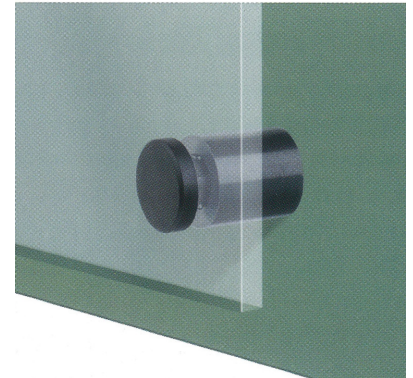


Panel Clamps / Stand Offs

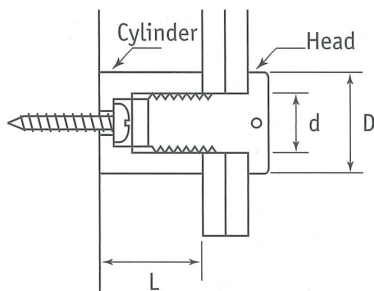
- New to our product range
- Designed to hold panels of glass, signage, wood etc
- Offsets the panel from the wall by 18mm
- Fantastic quick assembly
- two part component using a M4 screw (not supplied) to fix it to the wall



- Comes in 3 Colours Black, White, Grey
- Moulded in strong ABS Plastic
- Quick Assembly
- Adds Nice Finish to pannel fixings



★Also Available in Aluminium: Chrome, Black and Satin Silver



Part Number	D	d	L	Panel Thickness	Colour	Price ea Excl GST
04-PACL1817BM	17.0	10.0	18	6-10	Black	\$2.61
04-PACL1817GM	17.0	10.0	18	6-10	Grey	\$2.61
04-PACL1817WM	17.0	10.0	18	6-10	White	\$2.61

For samples, quote and availability please contact us: