

# Hi-Q Components

Hi-Q Electronics Ltd, PO Box 302 015, North Harbour, Auckland, New Zealand Ph + 64 9 415 3333 Fax + 64 9 415 8686

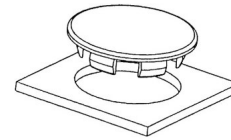
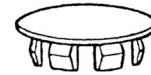
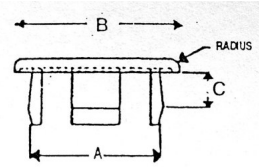
## Hole Plugs - Non Locking

### Imperial Sizes

- ★ Designed with flexible tapered prongs which snugly lock in place with finger pressure but can be removed easily and replaced.

Part Number	Panel Hole Diameter A	Max Panel Thickness	Head Dia. B	Depth C
22-PPP03	3.2	2.4	5.2	3.5
22-PPP05	4.8	3.6	8.7	5.8
22-PPP06	6.3	1.6	10.7	4.5
22-PPP08	8.0	3.6	11.5	6.0
22-PPP09	9.5	3.6	14.7	6.6
22-PPP11	11.1	4.3	15.5	8.0
22-PPP13	12.7	3.6	17.1	6.6
22-PPP16	15.9	1.8	20.2	4.7
22-PPP19	19.1	2.8	25.0	6.0
22-PPP22	22.2	2.8	27.4	6.0
22-PPP25	25.4	2.8	31.0	6.0

Nylon 6/6 Natural Matt - Black available



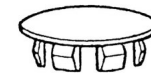
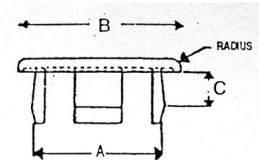
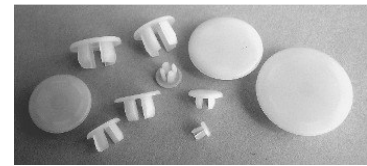
## Hole Plugs - Non Locking

### Metric Sizes

- ★ Designed with flexible tapered prongs which snugly lock in place with finger pressure but can be removed easily and replaced.

Part Number	Panel Hole Diam. Mm A	Max Panel Thickness	Head Dia. B	Head Height
22-PPP06M	6.0	0.8-1.6	10.0	2.0
22-PPP08M	8.0	0.8-3.5	12.0	2.0
22-PPP10M	10.0	0.8-3.5	14.0	2.0
22-PPP12M	12.0	0.8-3.5	16.0	2.0
22-PPP14M	14.0	0.8-3.5	18.0	2.0
22-PPP16M	16.0	0.8-3.5	20.0	2.0
22-PPP18M	18.0	0.8-4.0	22.0	2.0
22-PPP20M	20.0	0.8-4.0	26.0	2.0
22-PPP22M	22.0	0.8-4.0	27.8	2.0
22-PPP24M	24.0	0.8-4.0	28.0	2.0
22-PPP26M	26.0	0.8-4.0	30.0	2.0

Nylon 6/6 Natural Matt - Black available

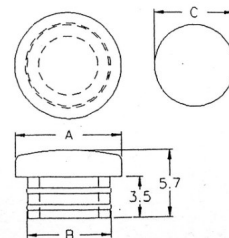


## Hole Plugs - Min. Bung Type

- ★ Suitable for thick panels and tubing end caps.
- ★ Moulded in Black T.P.E. in metric sizes.

Part Number	Panel Hole Diam. C	Head Dia. A	Diameter. B
22-PHD05	5.0	7.0	5.2
22-PHD06	6.0	8.0	6.2
22-PHD07	7.0	9.0	7.2
22-PHD08	8.0	10.0	8.2

Material : T.P.E. Black - For heavy duty types and othe sizes  
Refer Tube Inserts



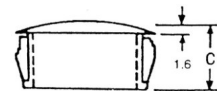
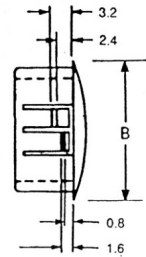
# Hi-Q Components

Hi-Q Electronics Ltd, PO Box 302 015, North Harbour, Auckland, New Zealand Ph + 64 9 415 3333 Fax + 64 9 415 8686

## Hole Plugs - Locking

★ Multiple locks to positively snap into panel thicknesses from 0.8 to 3.2 mm.

Part Number	Panel Hole Diameter	Max Panel Thickness	Head Dia. B	Depth C
22-PPL05	4.8	1.6	6.4	5.9
22-PPL06	6.3	1.6	8.0	8.0
22-PPL08	8.0	1.6	9.5	8.0
22-PPL09	9.5	3.2	12.0	10.3
22-PPL11	11.0	3.2	13.5	10.3
22-PPL13	12.7	3.2	14.6	10.3
22-PPL14	14.3	3.2	16.7	10.3
22-PPL16	15.9	3.2	18.2	10.3
22-PPL19	19.1	3.2	23.2	10.3
22-PPL20	20.6	3.2	22.6	10.3
22-PPL22	22.2	3.2	25.8	11.5
22-PPL25	25.4	3.2	30.5	11.5
22-PPL28	28.0	3.2	31.0	11.5
22-PPL30	30.1	3.2	33.3	11.5
22-PPL32	32.0	3.2	34.9	11.5
22-PPL35	35.0	3.2	38.0	11.5
22-PPL38	38.0	3.2	42.7	11.5
22-PPL45	45.0	3.2	48.9	11.5
22-PPL51	51.0	3.2	55.0	11.5
22-PPL64	63.5	3.2	70.5	19.1



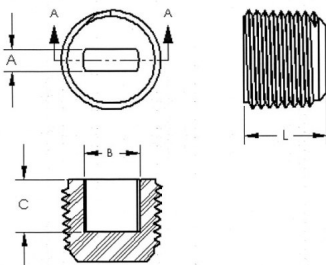
Molded in Black Heat Stabilised Nylon – UV Resistant

Natural & White available in some sizes – PPL 38, PPL45, PPL51 & PPL63 also available.

## Pipe Plugs – Slotted Threaded

### To fit NPT Sizes

- ★ Protect valves, hydraulic and pneumatic devices from contamination.
- ★ Grub style drive allows installation and removal with a common screw driver.
- ★ Nylon 6/6



Part Number	Description	A	B	C	L
22-NPT1/8-27	1/8-27 NPT Pipe Thread Plug	1.83	6.10	3.30	9.91
22-NPT1/4-18	1/4-18 NPT Pipe Thread Plug	3.81	7.92	3.3	12.70
22-NPT3/8-18	3/8-18 NPT Pipe Thread Plug	3.81	9.10	9.65	13.97
22-NPT1/2-14	1/2-14	3.81	11.89	9.27	14.35
22-NPT3/4-14	3/4-14 NPT Pipe Thread plug	4.44	13.97	11.05	15.49