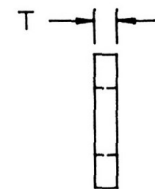
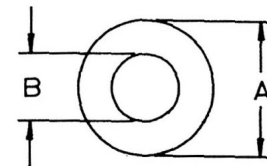
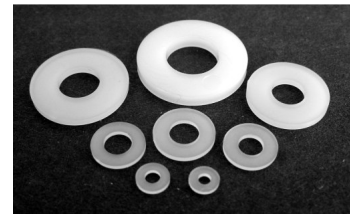


Hi-Q Components

Hi-Q Electronics Ltd, PO Box 302 015, North Harbour, Auckland, New Zealand Ph + 64 9 415 3333 Fax + 64 9 415 8686

★ Tough, durable and chemical resistant

Part Number	Screw Size	Inside Diameter B	Outside Diameter A	Thickness T
03-PNW2/4.3x	M2	1.9	4.3	0.5
03-PNW2/5	M2	2.2	5.0	0.8
03-PNW2.5/6	M2.5	2.7	5.6	0.8
03-3NB0.8	M3	2.9	6.3	0.8
03-3NB1.6		2.9	6.3	1.6
03-3NB2.4		2.9	6.3	2.4
03-PNW3/7A	M3	3.1	7.1	0.5
03-PNW3/8A		3.2	8.0	0.8
03-PNW3/8B		3.2	8.0	1.6
03-36NB0.8	#6 UNC	3.6	8.0	0.8
03-36NB1.6		3.6	8.0	1.6
03-36NB2.4		3.6	8.0	2.4
03-PNW4/8A	M4	4.0	8.1	0.8
03-PNW4/9A		4.3	9.0	0.8
03-PNW4/9B		4.3	9.0	1.6
03-PNW5/9A	M5	4.9	9.5	0.8
03-PNW5/9B		4.9	9.5	1.6
03-PNW5/11A		5.3	11.0	1.0
03-PNW5/11B		5.1	11.0	1.6
03-PNW5/14B		5.2	14.3	1.6
03-PNW5/19B		5.5	19.0	2.4
03-PNW6/12A	M6	6.4	12.0	1.5
03-PNW6/12X		6.4	11.8	0.4
03-PNW6/16A		6.4	15.8	1.5
03-PNW6/22A		6.5	22.0	1.6
03-PNW8/12A	M8	8.1	12.7	0.8
03-PNW8/16A		8.0	15.9	0.8
03-PNW8/18A		8.4	18.0	2.0
03-PNW8/19A		8.1	19.1	1.6
03-PNW8/22A		8.0	22.2	1.6
03-PNW8/25A		8.7	24.9	1.7
03-PNW10/17B	M10	10.0	17.5	3.0
03-PNW10/20A		10.2	20.5	1.7
03-PNW10/22B		10.5	22.0	2.5
03-PNW10/32A		10.2	32.4	1.6
03-PNW12/22A	M12	12.7	22.9	1.9
03-PNW12/30B		12.1	30.1	2.0
03-PNW13/19A	1/2"	12.8	19.1	1.6
03-PNW13/19B		12.8	19.1	2.4
03-PNW13/25B		13.2	25.4	2.0
03-PNW13/32B		13.1	31.8	1.6
03-PNW16/25A	M16	16.0	25.4	1.6
03-PNW16/31A		16.3	31.1	2.5
03-PNW16/38A		16.9	38.1	2.4
03-PNW20/32A	M20	20.5	31.8	1.5
03-PNW20/38B		20.6	37.9	1.6
03-PNW25/47B	1"	26.1	47.0	3.1



Wide range of other non stock sizes available on short deliveries.

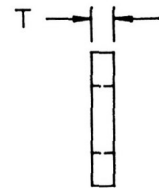
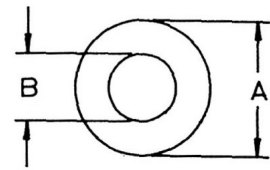
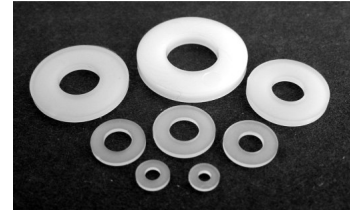
Hi-Q Components

Hi-Q Electronics Ltd, PO Box 302 015, North Harbour, Auckland, New Zealand Ph + 64 9 415 3333 Fax + 64 9 415 8686

Misc Flat Washers

★ Tough, durable and chemical resistant

Part Number	Screw Size	Inside Diameter B	Outside Diameter A	Thickness T
03-W02181B	M3	3.05	5.54	0.94
03-W03765	M3	3.56	9.53	2.03
03-W02852B	M4	4.06	7.24	0.81
03-W04376	M5	4.95	11.10	0.51
03-W05120		4.90	12.95	1.27
03-W06150B	M6	6.60	15.6	2.54
03-W06289		6.73	15.88	2.36
03-W04401		7.37	11.30	0.84
03-W04725		7.87	12.57	2.41
03-W07503		8.20	19.05	3.18
03-W07521	M8	8.13	19.05	6.35
03-W09400		8.41	23.98	2.49
03-W11001	M10	10.49	30.00	2.49
03-W08051		15.77	20.45	3.18
03-W09002	1/2"	13.08	22.86	1.52
03-W09901		19.30	25.40	1.57
03-W10570	M20	20.62	26.85	3.18



Wide range of other non stock sizes available on short deliveries.

Nylon 6/6 Natural

Suffix B denotes Black colour

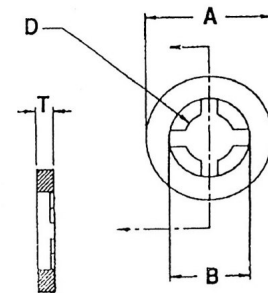
Hi-Q Components

Hi-Q Electronics Ltd, PO Box 302 015, North Harbour, Auckland, New Zealand Ph + 64 9 415 3333 Fax + 64 9 415 8686

Self Retaining Flat Washers

- ★ Specially configured ID grips screw shank
- ★ Facilitate pre-assembly and reduce cost

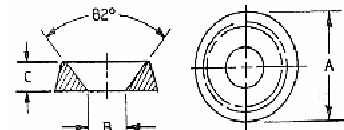
Part Number	Screw Size	I.D. D	I.D. B	O.D. A	Thick. T
03-RW03/5A	M2.5	2.0	2.9	5.2	0.8
03-RW03/5B	M2.5	2.0	2.9	5.2	1.6
03-RW04/7A	M3	2.6	4.0	6.8	0.8
03-RW04/7B	M3	2.6	4.0	6.8	1.6
03-RW04/7C	M3	2.6	4.0	6.8	3.2
03-RW05/8A	M4	3.3	5.0	8.3	0.8
03-RW05/8B	M4	3.3	5.0	8.3	1.6
03-RW06/10A	M4/M5	3.9	6.0	9.9	0.8
03-RW06/10B	M4/M5	3.9	6.0	9.9	1.6
03-RW07/12A	M5/M6	4.5	7.0	11.5	0.8
03-RW07/12B	M5/M6	4.5	7.0	11.5	1.6
03-RW10/15A	M8	6.0	9.5	15.1	0.8
03-RW10/15B	M8	6.0	9.5	15.1	1.6
03-RW12/19A	M8/M10	7.4	11.9	18.7	0.8
03-RW12/19B	M8/M10	7.4	11.9	18.7	1.6
03-RW14/23A	M10/M12	8.9	14.3	22.6	0.8
03-RW14/23B	M10/M12	8.9	14.3	22.6	1.6



Finishing Washers

- ★ Cover misaligned holes.
- ★ Protect paintwork.

Part Number	Screw Size	Inside Dia. B	Outside Dia. A	Thick. C
03-FW06	M3 / #6	3.6	11.1	2.5
03-FW08	M4 / #8	4.3	13.1	2.9
03-FW10	M5 / #10	4.9	14.7	3.9
03-FW12	M6 / #12	5.7	15.5	4.1
03-FW25	M6 / 1/4"	6.6	17.4	4.7



Cup Washers

- ★ Protect paintwork and add finish.

Part Number	Screw Size	A	B	C	D	E
03-CW04	M3 / #4	7.8	6.2	2.9	3.0	4.0
03-CW06	M3 / #6	9.1	7.6	3.6	3.6	4.6
03-CW08	M4 / #8	10.5	9.0	4.3	4.2	5.2
03-CW10	M5 / #10	11.9	10.4	4.9	4.8	5.9
03-CW25	M6 / 1/4"	15.1	13.6	6.5	6.3	7.3

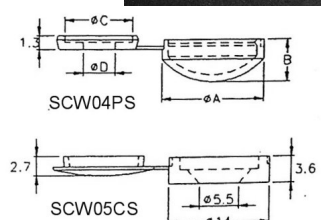


Screw Cap Washers

- ★ Conceal screw heads.
- ★ Protect paintwork.

Part Number	Screw Head	Screw Size	A	B	C	D	E
03-SCW04PS	Pan	M4 / #8	13.3	4.1	11.6	4.3	1.4
03-SCW05CS	C'sink	M5 / #10	14.0	2.7	14.0	5.5	3.6

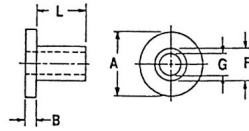
Nylon 6/6 White



Hi-Q Components

Hi-Q Electronics Ltd, PO Box 302 015, North Harbour, Auckland, New Zealand Ph + 64 9 415 3333 Fax + 64 9 415 8686

- ★ Tough, durable and chemical resistant.
- ★ Isolate metal screws and reduce corrosion.
- ★ Insulate mounting screws for power transistors.
- ★ Protect glass as buffer for metal screws.



Part Number	Material	Screw Size	Sleeve			Shoulder	
			I.D. G	O.D. F	Length L	O.D. A	Thickness B
03-2HW1.6	Nylon	M2.5	2.4	3.1	1.6	5.0	0.8
03-3NT0.8	Nylon	M3 TO-220	2.92	3.42	0.8	5.5	1.2
03-3NT1.4	Nylon		2.95	3.53	1.4	6.1	0.5
03-3NT2.0	Nylon		3.05	3.45	2.0	6.4	1.2
03-3NT3.2	Nylon		3.00	3.53	3.2	6.4	1.2
03-3NW0.8	Nylon	M3 Because of small tolerance s An M3 Screw can be a tight fit at times.	2.92	3.42	0.8	5.5	1.2
03-3NW1.2	Nylon		2.92	3.68	1.2	6.0	1.2
03-3NW1.6	Nylon		2.92	3.68	1.6	6.0	1.2
03-3NW2.4	Nylon		2.92	3.68	2.4	6.0	1.2
03-3NW3.2	Nylon		2.92	3.68	3.2	6.0	1.2
03-3NW4.0	Nylon		2.92	3.68	4.0	6.0	1.2
03-3NW4.8	Nylon		2.92	3.68	4.8	6.0	1.2
03-3NW6.3	Nylon		2.92	3.68	6.3	6.0	1.2
03-3RW2.4	Nylon		2.92	3.79	2.4	7.9	1.6
03-SWS0196	Nylon		2.89	3.42	1.2	6.1	1.6
03-3TW1.2	PBT		M3 TO-220	2.9	3.5	1.2	6.2
03-3TW1.6	PBT	2.9		3.5	1.6	6.1	1.4
03-3TW2.0	PBT	3.0		3.5	2.0	6.0	2.0
03-3TW2.5	PBT	2.9		3.5	2.5	6.2	2.0
03-3TW3.0	PBT	3.0		3.5	3.0	6.2	1.5
03-BSW125140	PPS	M3 TO-220	2.84	3.56	3.18	7.1	1.07
03-BSW032135	PPS		2.95	3.43	0.81	5.5	1.02
03-BSW031145	PPS		3.00	3.68	0.79	7.1	1.19
03-SWS0440	Nylon	1/8"	3.3	3.9	7.9	7.9	0.8
03-3UW1.6	Nylon	#6	3.6	4.3	1.6	7.4	1.2
03-4NV1.6	Nylon	M4	4.1	4.9	1.6	7.6	1.2
03-4NW3.2	Nylon		4.4	5.2	3.2	8.7	1.6
03-4NW6.4	Nylon		4.4	5.2	6.4	8.7	1.6
03-4RX0.8	Nylon		4.2	6.3	0.8	9.5	1.6
03-4RX1.2	Nylon		4.0	6.2	1.2	10.2	1.2
03-5NW1.6	Nylon	M5	5.1	6.6	1.6	10.1	1.6
03-5NW3.6	Nylon		5.1	6.6	3.6	10.1	1.6
03-5NW4.8	Nylon		5.1	6.6	4.8	10.1	1.6
03-5NW6.3	Nylon		5.1	6.6	6.3	10.1	1.6
03-5NW9.5	Nylon		5.1	6.6	9.5	10.1	1.6
03-6NW3.2	Nylon	M6	6.6	7.9	3.2	13.0	1.6
03-6NW4.8	Nylon		6.6	7.9	4.8	13.0	1.6
03-6NW6.3	Nylon		6.6	7.9	6.3	13.0	1.6
03-6NW9.5	Nylon		6.6	7.9	9.5	13.0	1.6
03-6NW12.7	Nylon		6.6	7.9	12.7	13.0	1.6
03-6RX3.2	Nylon		6.3	9.2	3.2	15.2	3.2
03-SWS0905	Nylon		6.3	7.9	1.6	10.8	1.6
03-SWS0940	Nylon		6.1	8.0	4.0	12.27	1.5
03-8NW3.2	Nylon		M8	8.1	9.1	3.2	15.7
03-8NW6.4	Nylon	8.1		9.1	6.4	15.7	1.6
03-SWS1211	Nylon	8.13		10.3	3.53	15.9	1.6
03-SWS2504	Nylon	8.33		11.1	3.18	17.45	3.18
03-SWS2515	Nylon	M10	10.67	11.94	10.67	18.03	1.9
03-SWS3562	Nylon		9.7	14.1	6.4	24.9	3.2
03-SWS3520	Nylon		10.3	11.9	13.5	24.0	2.0
03-SWS4006	Nylon	M12	12.0	13.4	10.3	31.8	1.6
03-SWS4005	Nylon		13.7	15.2	10.3	31.8	1.6

Max. Service Temps.: Nylon 6/6 Natural (UL94V2) 80 °C PBT Polybutylene terephthalate (UL94VO) 130 °C
PPS Polyphenylene Sulfide (UL94VO) 260 °C
Other sizes on short delivery times.