

## Insulating Washers

Tough, durable and chemical resistant • Isolate metal screws and reduce corrosion

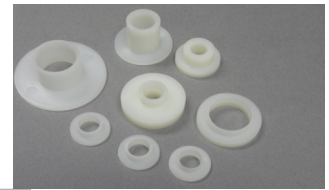
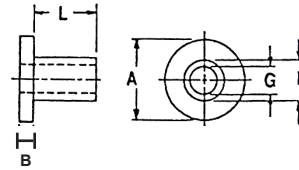
Insulate mounting screws for power transistors, create a buffer for metal screws or protect glass.

### Maximum Service Temperatures:

Nylon 6/6 Natural (UL94V2) 80 °C

PBT Polybutylene Terephthalate (UL94VO) 130 °C

PPS Polyphenylene Sulfide (UL94VO) 260 °C



Part Number	Material	Screw Size	Sleeve			Shoulder	
			I.D. G	O.D.F	Length L	O.D.A	Thickness B
03-2HW1.6	Nylon	M2.5	2.4	3.1	1.6	5.0	0.8
03-SWS0280	Nylon	M3	2.8	3.8	4.7	7.11	1.0
03-SWS0200	Nylon	M3	2.95	3.4	0.8	5.08	1.98
03-SWS0196	Nylon	M3	2.9	3.4	1.25	6.1	1.6
03-3NW0.8V	Nylon	M3	2.92	3.42	0.8	5.5	1.2
03-3NW1.2	Nylon	M3	2.92	3.68	1.2	6.0	1.2
03-3NW1.6	Nylon	M3	2.92	3.68	1.6	6.0	1.2
03-3NW2.4	Nylon	M3	2.92	3.68	2.4	6.0	1.2
03-3NW2.4B*	Nylon	M3	2.92	3.68	2.4	6.0	1.2
03-3NW3.2	Nylon	M3	2.92	3.68	3.2	6.0	1.2
03-3NW4.0	Nylon	M3	2.92	3.68	4.0	6.0	1.2
03-3NW4.8V	Nylon	M3	2.92	3.68	4.8	6.0	1.2
03-3NW6.3	Nylon	M3	2.92	3.68	6.3	6.0	1.2
03-3NW12.7	Nylon	M3	2.92	3.68	12.7	6.0	1.2
03-3RW2.4	Nylon	M3	2.92	3.79	2.4	7.9	1.6
03-3NT0.8	Nylon	M3	2.92	3.40	0.8	5.5	1.2
03-3NT1.4	Nylon	M3	2.92	3.53	1.4	6.1	0.5
03-3NT2.0	Nylon	M3	3.0	3.45	2.0	6.4	1.2
03-3NT3.2	Nylon	M3	3.0	3.53	3.2	6.4	1.2
03-SWS0253	Nylon	M3	3.0	3.43	1.3	5.1	2.0
03-3SM2.0	Nylon	M3	3.1	4.0	2.0	6.2	1.0
03-3SM8.0	Nylon	M3	3.1	4.0	8.0	6.2	1.0
03-SWS0440	Nylon	1/8"	3.3	3.9	7.9	7.9	0.8
03-3TW0.6	PBT	M3 - TO 220	3.0	3.5	0.6	6.2	0.4
03-3TW1.2	PBT	M3 - TO 220	3.0	3.5	1.2	6.2	1.0
03-3TW1.6	PBT	M3 - TO 220	3.0	3.5	1.6	6.1	1.4
03-3TW2.0	PBT	M3 - TO 220	3.0	3.5	2.0	6.0	2.0
03-3TW2.5	PBT	M3 - TO 220	3.0	3.5	2.5	6.2	2.0
03-3TW3.0	PBT	M3 - TO 220	3.0	3.5	3.0	6.2	1.5
03-BSW125140	PPS	M3 - TO 220	2.84	3.56	3.18	7.1	1.07
03-BSW032135	PPS	M3 - TO 220	2.95	3.43	0.81	5.5	1.02
03-BSW031145	PPS	M3 - TO 220	3.0	3.68	0.79	7.1	1.19
03-SWS0478	Nylon	M3	3.5	5.59	19.05	8.26	1.19
03-3UW1.6	Nylon	#6	3.6	4.3	1.6	7.4	1.2
03-SWS0469	Nylon	M4	4.0	5.3	3.1	9.85	4.75
03-4RX1.2	Nylon	M4	4.0	6.2	1.2	10.2	1.2
03-4NV1.6	Nylon	M4	4.1	4.9	1.6	7.6	1.2
03-4NWM5.0	Nylon	M4	4.1	6.0	5.0	8.4	1.5
03-4RX0.8	Nylon	M4	4.2	6.3	0.8	9.5	1.6
03-SWS1016	Nylon	M4	4.2	6.35	11.1	12.7	3.2
03-4NW3.2	Nylon	M4	4.4	5.2	3.2	8.7	1.6
03-4NW6.3	Nylon	M4	4.4	5.2	6.3	8.7	1.6
03-SWS2583	Nylon	M4	4.45	8.0	2.1	12.9	1.5
03-SWS0425	Nylon	M5	4.98	6.35	0.8	8.0	1.6
03-SWS0425X	Glass filled polyester	M5	4.98	6.35	0.8	8.0	1.6
03-SWS1096	Nylon	M5	5.0	7.9	9.53	11.1	1.4
03-5NW1.6	Nylon	M5	5.1	6.6	1.6	10.1	1.6
03-5NW3.6	Nylon	M5	5.1	6.6	3.6	10.1	1.6

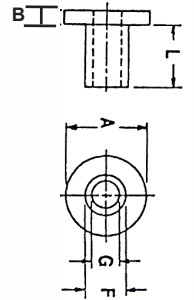
\* = Black Nylon 6/6

Continued on next page

## Insulating Washers - Continued

Tough, durable and chemical resistant • Isolate metal screws and reduce corrosion

Part Number	Material	Screw Size	Sleeve			Shoulder	
			I.D.G	O.D.F	Length L	O.D.A	Thickness B
03-5NW4.8V	Nylon	M5	5.1	6.6	4.8	10.1	1.6
03-5NW6.3V	Nylon	M5	5.1	6.6	6.3	10.1	1.6
03-5NW9.5V	Nylon	M5	5.1	6.6	9.5	10.1	1.6
03-SWS0425	Nylon	M5	5.1	6.35	0.79	7.93	1.6
03-SWS1007	Nylon	M5	5.1	7.14	1.2	11.1	1.2
03-SWS0897	Nylon	M5	5.13	7.87	8	11	2.0
03-SWS0804	Nylon	M6	6.0	8.0	4.5	9.02	0.51
03-SWS0940	Nylon	M6	6.1	8.0	4.0	12.27	1.5
03-6NW10	Nylon	M6	6.1	8.0	10.0	12.0	2.0
03-6RX3.2V	Nylon	M6	6.3	7.93	3.2	15.2	3.2
03-SWS0905V	Nylon	M6	6.3	7.9	1.6	10.8	1.6
03-SWS1034	Nylon	M6	6.4	7.92	0.8	12.7	0.8
03-SWS0610	Nylon	M6	6.5	7.36	1.6	8.83	0.8
03-SWS1005	Nylon	M6	6.5	7.9	2.0	11.8	0.4
03-SWS1012B-UV**	Nylon	M6	6.76	9.11	3.18	17.7	1.6
03-6NW3.2V	Nylon	M6	6.6	7.9	3.2	13.0	1.6
03-6NW3.2BV*	Nylon	M6	6.6	7.9	3.2	13.0	1.6
03-6NW4.8	Nylon	M6	6.6	7.9	4.8	13.0	1.6
03-6NW4.8B-UVV**	Nylon	M6	6.6	7.9	4.8	13.0	1.6
03-6NW6.3V	Nylon	M6	6.6	7.9	6.3	13.0	1.6
03-6NW9.5V	Nylon	M6	6.6	7.9	9.5	13.0	1.6
03-6NW12.7V	Nylon	M6	6.6	7.9	12.7	13.0	1.6
03-6NW12.7BV**	Nylon	M6	6.6	7.9	12.7	13.0	1.6
03-SWS2586	Nylon	-	7.14	12.7	6.3	19	3.2
03-SWS3510	Nylon	-	7.77	11.30	10.3	20.9	2.3
03-SWS1027	Nylon	M8	7.9	9.27	12.7	12.7	1.6
03-8NW3.2V	Nylon	M8	8.1	9.1	3.2	15.7	1.6
03-8NW3.2B-UVV**	Nylon	M8	8.1	9.1	3.2	15.7	1.6
03-8NW6.4V	Nylon	M8	8.1	9.1	6.35	15.7	1.6
03-8NW12.7V	Nylon	M8	8.1	9.1	12.7	15.7	1.6
03-8NW15.9V	Nylon	M8	8.1	9.1	15.9	15.7	1.6
03-SWS1211	Nylon	M8	8.13	10.3	3.53	15.9	1.6
03-SWS1211BV**	Nylon	M8	8.13	10.3	3.53	15.9	1.6
03-SWS3601	Nylon	M8	8.26	11.05	4.76	25.4	6.3
03-SWS2504	Nylon	M8	8.33	11.1	3.18	17.45	3.18
03-8NW9.0B*	Nylon	M8	8.5	12.8	9.0	25.0	4.5
03-SWS1155	Nylon	M8	8.5	9.4	1.2	14.3	0.6
03-SWS1161	Nylon	-	9.0	10.0	15.75	14.3	1.6
03-SWS3562*	Nylon	-	9.7	14.1	6.4	24.9	3.2
03-SWS3021	Nylon	-	9.91	12.57	11.2	18.8	1.59
03-SWS2532	Nylon	-	9.93	13.8	3.9	18.9	2.5
03-SWS3561BV**	Nylon	M10	10.31	12.7	4.77	19.05	1.57
03-SWS3564	Nylon	M10	10.3	13.87	6.3	24.8	3.2
03-SWS3565	Nylon	M10	10.1	13.89	15.7	25	1.5
03-SWS3520	Nylon	M10	10.3	11.9	13.5	24.0	2.0
03-SWS3520B*	Nylon	M10	10.3	11.9	13.5	24.0	1.9
03-SWS2515V	Nylon	M10	10.67	11.94	10.67	18.03	1.9
03-SWS4007	Nylon	-	11	27.8	5.2	44.2	5.2
03-SWS4006**	Nylon	M12	12.0	13.4	10.3	31.8	1.6
03-SWS4007BV**	Nylon	M12	12.192	14.6	42.92	23.97	3.17
03-SWS2587	Nylon	M12	12.7	15.8	11.1	19	1.6
03-SWS2588V	Nylon	M12	12.7	15.88	6.35	22.23	1.57
03-SWS2573V	Nylon	M12	12.7	15.9	9.4	23.50	2.03
03-SWS2593V	Nylon	M12	12.78	15.88	4.42	19.05	1.68
03-SWS3589	Nylon	M12	12.8	18.8	15.7	25.2	3.2



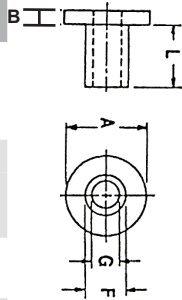
\* = Black Nylon 6/6  
 \*\* = UV resistant  
 Black Nylon 6/6

Continued on next page

## Insulating Washers - Continued

Tough, durable and chemical resistant

Part Number	Material	Screw Size	ID G	Sleeve		Shoulder	
				OD F	Length L	OD A	Thickness B
03-SWS2571	Nylon	-	13.1	14.7	8.13	19	0.8
03-SWS3102	Nylon	-	13.2	15.7	12.7	20.9	1.6
03-SWS4005	Nylon	-	13.7	15.2	10.3	31.8	1.6
03-SWS3160	Nylon	<b>M16</b>	16.13	19.0	12.7	22.2	1.6
03-SWS3609	Nylon	<b>M16</b>	16.4	18.9	3	25.4	3.3
03-SWS5050V	Nylon	<b>M16</b>	16.4	19.0	12.7	38.7	1.6
03-SWS5051BV**	Nylon	<b>M16</b>	16.51	21.59	30.58	40.00	2.00
03-SWS3205	Nylon	-	17.6	19.9	15.8	25.3	3.2
03-SWS3622V	Nylon	-	19.0	25.4	21.44	31.75	3.96
03-SWS3688	Nylon	-	19.0	22.35	7.9	28.7	1.6
03-SWS3698	Nylon	<b>M20</b>	20.6	25.14	5.6	38.1	3.05
03-SWS3616	Nylon	<b>M20</b>	20.6	22.7	10.3	24.8	3.81
03-SWS3693	Nylon	<b>M20</b>	20.8	25.5	10.7	31.2	4
03-SWS3694BV**	Nylon	<b>M20</b>	20.82	26.16	6.35	47.75	3.30
03-SWS3677V	Nylon	-	22.3	23.75	5.56	28.45	3.35
03-SWS3582	Nylon	-	22.2	25.4	17.5	31.75	1.6
03-SWS4020V	Nylon	-	25.4	34.67	7.95	38.10	3.18
03-SWS4013	Nylon	-	25.8	34.9	15.9	44.5	3.2
03-SWS4250V	Nylon	-	31.62	34.16	7.62	38.10	1.6



\* = Black Nylon 6/6    \*\* = UV resistant Black Nylon 6/6

For non-stocked black washers, enquire about our in-house dye service.  
Dye charges apply.

**Other sizes available with short lead times**