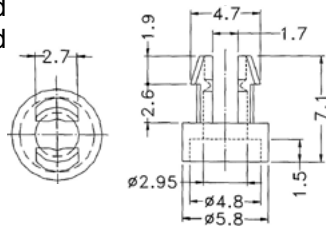


Miniature Spacer Grommet Nut

Quick, positive securing of panels and PCB's

As the M3 screw is tightened the legs expand to securely lock the screw and assembled parts in place.

Part Number: 04-SOR001



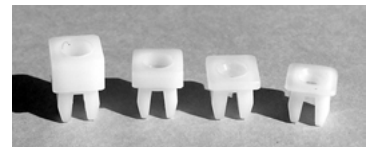
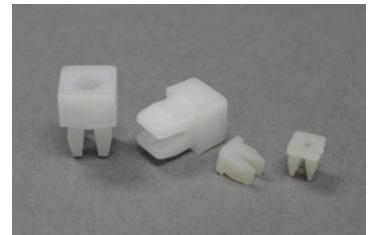
Square Head Spacer Grommet Nuts

Low cost, positive fastening of thin gauge materials and PCB's

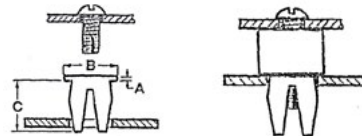
Recommended for securing heavy PCB modules

As the M3 screw is tightened the legs expand to securely lock the screw and assembled parts in place.

Part Number	Hole Size mm	Panel Thickness	Screw Size	Head Size B	Head Height A	Length C
04-PSG135	4.4-4.5 sq	0.8-2.0	4	5.4	1.3	5.5
04-PSG635	4.4-4.5 sq	0.8-2.0	4	5.4	6.3	5.5
04-PSG001	7.0-7.4 sq	0.8-3.2	8-10	9.5	0.8	8.1
04-PSG002	7.0-7.4 sq	0.8-3.2	8-10	9.5	1.6	8.1
04-PSG003	7.0-7.4 sq	0.8-3.2	8-10	9.5	3.2	8.1
04-PSG004	7.0-7.4 sq	0.8-3.2	8-10	9.5	6.4	8.1
04-PSG130	9.4-9.5 sq	0.8-2.5	12	15.8	2.0	7.0
04-PSG150	7.87 sq	0.8-4.3	10	11.8	1.6	7.5



PSG004, 003, 002 & 001

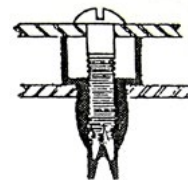


Closed Screw Spacer Grommet Nuts

Ideal for securing heavy PCB modules

All the advantages of the standard grommet nut, but the metal screw is encapsulated by the grommet, thus insulating it from electrical wiring and guards against moisture.

Part Number	Spacer Height A	Spacer Diameter B	Hole Size mm	Panel Thickness	Screw Size	Length C
04-PSGC0002	1.6	9.5	6.9-7.4 sq	0.5-3.5	8-10	13.9
04-PSGC0003	3.2	9.5	6.9-7.4 sq	0.5-3.5	8-10	13.9
04-PSGC0004	6.3	9.5	6.9-7.4 sq	0.5-3.5	8-10	13.9



Screw Anchors

Twist resisting flange

Can be used in wood, masonry block, concrete, tile or brick.

Multi-use light duty nylon anchor for use with metal or wood screws.

Part Number	Screw Size	Drill Size	A	B	L
04-SA06	#6-#8	4.8	8	1	22.2
04-SP06	#6-#8	6.0	6.0	-	29.5
04-SA10	#10-#12	6.4	9.5	1	27.0

